

Urbscape® Green Roll (HTC GR)

Description

Urbscape® Green Roll (HTC GR) is made of long rock mineral wool fibres specially needed to form a compact and dimensionally stable felt. Product is made solely of virgin rock mineral fibres. Urbscape® Green Roll ensures excellent water retention and conservation in green roofs and is a good growing medium made from various mineral mixtures.



Installation

- Roll out Urbscape® Green Roll crosswise on top of the drainage panels/rolls.
- You might create a non covered area from the edge of the roof. This area will be used as a gravel area. Install Urbscape® Green Roll tightly side by side.
- If necessary Urbscape® Green Roll can be cut to the right size (scissors preferable).

Products	Thickness (mm)	Width (m)	Length (m)	Units per pallet	Weight (kg/m ²)	Pallet weight (kg/pallet)	Water retention (l/m ²)
Green Roll Standard	20	1	6	24	2.20	316.80	17
Green Roll Standard	40	1	3	24	4.40	316.80	29
Green Roll Standard MD	26	1	5	12	3.30	202.80	17
Green Roll Standard HD	26	1	5	12	3.90	234.00	17

Products	Thickness (in)	Width (ft)	Length (ft)	Units per pallet	Weight (lb/ft ²)	Pallet weight (lb/pallet)	Water retention (gal/ft ²)
Green Roll Standard	0.8	3.28	19.7	24	0.45	698.4	0.417
Green Roll Standard	1.6	3.28	9.8	24	0.90	698.4	0.712
Green Roll Standard MD	1	3.28	16.4	12	0.67	447.1	0.417
Green Roll Standard HD	1	3.28	16.4	12	0.80	515.9	0.417

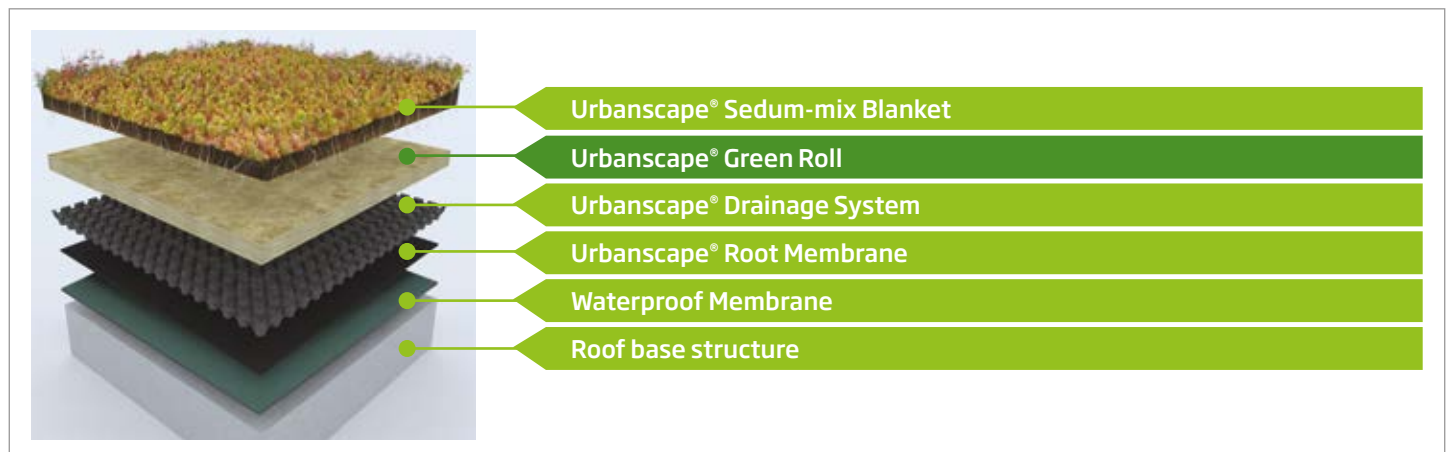
Technical Properties of Urbanscape® Green Roll

Property	Unit	Value	Standard
Nominal density*	kg/m ³ (lb/ft ³)	100, 130 (MD), 150 (HD) 6.9, 8.1 (MD), 9.3 (HD)	EN 1602
Initial water absorption**	times	8.3	
Initial water absorption under 700 N/m ² pressure**	times	7.0	
Water absorption characteristics	%	72	WOK analysis
Thickness tolerance*	T2	EN 14303	
Maximum service temperature*	°C (°F)	100 (212)	EN 14706
Thermal conductivity at mean temperature* λ _{N,P}	W/mK	0.040	EN 12667
Reaction to fire		Euroclass A1	EN 13501-1

*Valid for dry state **The ratio of the weight of water absorbed by a material, to the weight of the dry material.

Certificates : CE, EUCEB, RAL, ISO 9001, ISO 14001, EN 16001, OHSAS 18001

Urbanscape® Green Roof System Benefits



All rights reserved, including those of photomechanical reproduction and storage in electronic media. Commercial use of the processes and work presented in this document is not permitted. Extreme care was taken in the assembling of the information, texts and illustrations herein. Nevertheless, errors cannot entirely be ruled out. The publisher and editors cannot assume legal responsibility or any liability whatsoever for any incorrect information or any consequences thereof. The publisher and editors are grateful for suggestions for improvement and any errors pointed out.

KNAUFINSULATION

urbanscape[®]

Phone: 0468 787 071
Email: rob@greenlook.com.au

Urbscape® Green Flocks

October 2018

Description

Urbscape® Green Flocks are made of needled rock mineral wool. Green Flocks are used as a growing medium for the professional cultivation of plants or as a high quality soil enhancer used to improve soil and save water in a variety of different landscaping applications.

Urbscape® landscaping and landscape-shaping materials are made from natural, locally sourced volcanic rock. Rock mineral fibres are produced in a heating process entirely without any chemical binders and have superior water storage and release properties that make water and nutrients easily accessible to plants. This in turn improves soil structure and reduces environmental stress on plants.



Applications

Mixing evenly with soil or any other growing media improves water retention capacity and aeration.

Where to use it

- Landscaping applications (lawn areas, slope greening, urban tree planting, design of shaped patios,...)
- Containers

Why

- Improves soil/substrate characteristics
- Reduces environmental stress on plants
- Plant growth and roots' development
- Produces more vigorous and resistant plants
- Improves soil tilth (soil becomes loose and fluffy)

Benefits

- | | | | |
|--|--|--|--|
|  High water absorption |  Reduced irrigation frequency |  Reduced fertilizer consumption |  Improved root growth |
|  Stronger plants |  Efficient installation |  Sustainability |  Improved water air ratio |

KNAUFINSULATION


urbscape®

Phone: 0468 787 071
Email: rob@greenlook.com.au

Technical Properties of Urbanscape® Green Flocks

Characteristic	Unit	Value
Specific weight	kg/m ³ (lb/ft ³)	200 (12.5)
Ignition loos	%wt	max. 0.2
Flock size	mm (in)	~20 (~0.8)
Colour		Grey/Green
Initial water absorption*	volume	90%
pH (CaCl ₂)		7.5

Certificates: EUCEB, RAL, ISO 9001, ISO 14001, OHSAS 18001

Usage / Installation

- Mix with any substrate or other growing media to improve water retention capacity and aeration. Water in the planting container is evenly distributed and intervals between watering are longer.
- Mix into sandy or loomy soil to improve aeration and water distribution. Water is easily available for plant uptake.
- We recommend mixing at least 20% of Green Flocks into the growing medium. The more you add, the better are results.

1. Simple to use



Mix Green Flocks by hand or with tools into the garden or field soil at a ratio 1 bag at 1m³ of soil.




Prepare the planting pit. Mix Green Flocks with the field soil or purpose substrate at least one bag per 1 cbm of soil/substrate. More is better.

2. Usual care

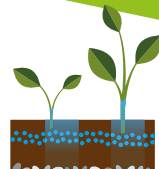


Plant or sow plants and water them well. Green Flocks should be covered with soil.

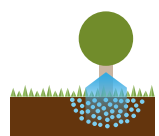


Plant shrubs and trees, cover all exposed roots with the mixture and water well. Flocks should be covered with layer of soil to prevent the evaporation additionally.

3. Less watering



Green Flocks retain additional water, so that the plant may access it as required.



Green Flocks retain additional water thus the shrubs and trees may access it when required.

Recommendations

By adding Urbanscape® Green Flocks to the soil you achieve:

- better growing medium characteristics
- less environmental stress on the plants
- better plant growth
- better plant vigour & resistance

Mixing regular soil with Urbanscape® Green Flocks improves soil structure and produces higher yields. At the same time watering can be reduced by up to 50%. Results may vary due to the type of soil, vegetation and climatic conditions. It is

recommended to mix at least 10% of Green Flocks into regular soil or growing substrate. The more Green Flocks are added, the better results are achieved. Especially recommended for outdoor growing.

Packaging of Urbanscape® Green Flocks

Product	pallet size (mm)	kg/bag	bags/pallet	kg/pallet	pallet/cont (HC 40 ft)	bags/cont (HC 40 ft)	kg/cont (HC 40 ft)	pallet/truck (13,6 m)	bags/truck (13,6 m)	kg/truck (13,6 m)
Green Flocks 15kg (469822)	1200 × 1200 × 1400	15	28	420	-	-	-	44	1.232	18.480
Green Flocks 22kg (599273)	1050 × 1050 × 1250	22	12	264	44 (22*)	528 (572*)	11.616 (12.584*)	52	624	13.728
Green Flocks 22kg (615954)	1050 × 1050 × 1250	22	14	308	22*	572*	12.584*	52	728	16.016

Product	pallet size (ft)	lb/bag	bags/pallet	lb/pallet	pallet/cont (HC 40 ft)	bags/cont (HC 40 ft)	lb/cont (HC 40 ft)	pallet/truck (44,6 ft)	bags/truck (44,6 ft)	lb/truck (44,6 ft)
Green Flocks 15kg (469822)	3.9 × 3.9 × 4.6	33.07	28	926	-	-	-	44	1.232	40.741
Green Flocks 22kg (599273)	3.5 × 3.5 × 4.1	48.50	12	582	44 (22*)	528 (572*)	25.609 (27.743*)	52	624	30.265
Green Flocks 22kg (615954)	3.5 × 3.5 × 4.4	48.50	14	679	22*	572*	27.743*	52	728	35.309

*combined loading - 22 pallets of 599273 + 22 pallets of 2615954

Urbscape® Green Cubes

September 2018

Description

Urbscape® Green Cubes are made of needled rock mineral wool. Green Cubes are used as a growing medium for the professional cultivation of plants or as a high quality additive used to improve soil and save water in a variety of different landscaping applications.

Urbscape® landscaping and landscape-shaping materials are made from natural, locally sourced volcanic rock. Rock mineral fibres are produced in a heating process entirely without any chemical binders and have superior water storage and release capabilities that make water and nutrients easily accessible to plants. This in turn improves soil structure and reduces environmental stress on plants.



Applications

Mixing evenly with soil or any other growing media improves water retention capacity and aeration.

Where to use it

- Landscaping applications (planting pits, garden beds)
- Containers
- Pots

Why

- Improves soil/substrate characteristics
- Reduces environmental stress on plants
- Delivers better plant growth and roots' development
- Produces more vigorous and resistant plants
- Improves soil tilth (soil becomes loose and fluffy)

Benefits

-  High water absorption
-  Reduced irrigation frequency
-  Reduced fertilizer consumption
-  Improved root growth
-  Stronger plants
-  Efficient installation
-  Sustainability
-  Improved water air ratio

KNAUFINSULATION


urbscape

Phone: 0468 787 071
Email: rob@greenlook.com.au

Technical Properties of Urbanscape® Green Cubes

Characteristic	Unit	Value	Standard
Specific weight	kg/m ³ (lb/ft ³)	110 (6.87)	
Ignition loos	%wt	max. 0.2	6
Fibre diameter	µm (µin)	approx. 4.5 (177)	SK_109
Cube size	mm (in)	20 × 20 × 20 (0.8 × 0.8 × 0.8)	
Colour		Grey/Green	
pH (CaCl ₂)		7.5	
Initial water absorption*	times	7	

*The ratio of the weight of water absorbed by a material to the weight of the dry material.
 Certificates: EUCEB, RAL, ISO 9001, ISO 14001, OHSAS 18001

Usage / Installation

- Mix with any substrate or other growing media to improve water retention capacity and aeration. Water in the planting container is evenly distributed and intervals between watering are longer.
- Mix into sandy or loamy soil to improve soil aeration and water distribution. Water is easily available for plant uptake.
- We recommend mixing at least 20% of Green Cubes into the growing medium.
- The more you add, the better results are achieved.

1. Simple to use

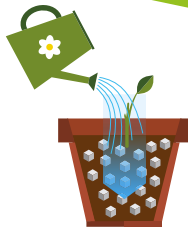


Mix Green Cubes with the substrate at a ratio of 1:5 (1/5 cubes with 4/5 substrate). The proportion of cubes can be increased when planting plants with more demanding water requirements.

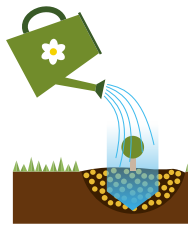


Prepare the planting pit. Mix Green Cubes with the field soil or purpose substrate at a ratio of 1:5 (1/5 cubes mixed with 4/5 substrate).

2. Usual care



Place the mixture in a pot. Place the plant in the ready-made mixture and water thoroughly. The cubes should be covered with soil.

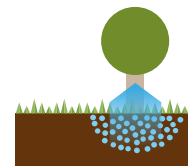


Plant shrubs and trees, cover all exposed roots with the mixture and water well. Cubes should be covered with a layer of soil to prevent the evaporation.

3. Less watering



Green Cubes retain additional water so that the plant may access it as required.



Green Cubes retain additional water thus that the shrubs and trees may access it as required.

Recommendations

By adding the Urbanscape Green Cubes to the soil you achieve:

- better growing medium characteristics
- less environmental stress on the plants
- better plant growth
- better plant vigour & resistance

Especially recommended for outdoor growing.

Mixing regular soil with Urbanscape Green Cubes improves soil structure and produces higher yields. At the same time watering frequency can be reduced by up

to 50%. Results may vary due to the type of soil, vegetation and climatic conditions. It is recommended to mix at least 20% of Green Cubes into regular soil or substrate. The more cubes you add, the better results are achieved.

Packaging of Urbanscape® Green Cubes

Product	pallet size	weight/pallet	pallet/cont (HC 40ft)	Btto weight /cont (HC 40ft)	pallet/truck (44.6ft)	Btto weight/truck (44.6ft)
Green Cubes D11 (425445)	1280 × 1040 × 1250 mm	125 kg	40	5.000 kg	46	5.750 kg
	4.2 × 3.4 × 4.1 ft	275 lb	40	11.023 lb	46	12.676 lb

*Also available in retail packaging